



**BRICK & BLOCK**

*Manufacturers Since 1868*



## Retaining Walls

  
**VERSA-LOK**<sup>®</sup>  
Retaining Wall Systems  
*Solid Solutions*<sup>™</sup>

**FEB 2017**



# MCNEAR

BRICK & BLOCK

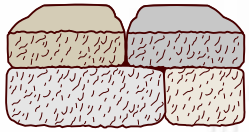
McNear Brick & Block opened in 1868 to support the gold-fueled construction boom in San Francisco and surrounding Bay Area cities. Back then, our workers made bricks by hand and used wheelbarrows to load them onto scow schooners for delivery to the many small ports lining San Francisco Bay.

The days of horse and sail are long gone, but the landmarks built with our products, such as Ghirardelli Square and the Golden Gate Bridge, remain. So too, does our commitment to beauty and durability.

## Creating Timeless Beauty in a Changing World

Our product lines have also changed and grown. We now manufacture a much wider range of clay brick products, including our new *Thin Brick*, which we ship across the country. We are also now a leading manufacturer of *Interlocking Pavers*, and the *Segmental Retaining Walls* shown in this brochure. With all our products, from bricks to pavers to walls, we are distinguished from our competitors by our high quality and superior colors.

Visit [www.mcnear.com](http://www.mcnear.com), to find out more about McNear's products and history, or to order brochures of our other product lines.



# Retaining Walls



McNear Brick & Block is the exclusive Northern Californian manufacturer of the **VERSA-LOK**® family of segmental retaining walls. Our **VERSA-LOK** retaining walls have revolutionized the way that Californian landscapes are shaped, terraced, and used. The advantages of **VERSA-LOK** Retaining Walls are many: they are attractive, durable, affordable, strong, and versatile.

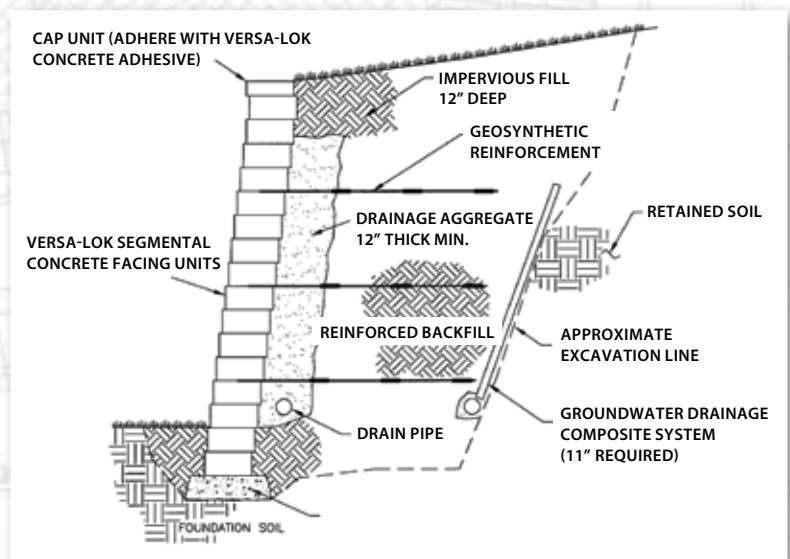
McNear manufactures a wide range of Retaining Wall Systems, varying in size, appearance, and capabilities. These systems can be used alone or in conjunction to build almost any detail, including straight and curved walls, corners, stairs, seats, and planters.

*McNear Retaining Walls* are distinguished by our broad range of natural color blends, and our realistic stone textures. These beautiful walls add timeless beauty, functionality, and value to any landscape. Our retaining walls also blend naturally with our many styles of Interlocking Pavers.

## Table of Contents

Mosaic	3-6
Square Foot	7-10
VERSA-LOK® Standard	11-13
Handy-Scape®	14
VERSA-Green®	15
Specifications	16-17
Picture Gallery	18-21
Accessories	22
How to Purchase McNear Products	22

## Typical Reinforced Wall Section



Pictured on front: Weathered Mosaic, Color: Mojave (pages 3-6)

PHOTOGRAPHY BY: DRCC VISION, WHEELER IMAGING, ARGENT PHOTOGRAPHY, BLACK CAT STUDIO, THOMAS ACHIZ



## Mosaic

Renowned for its rustic beauty, our *Mosaic* Retaining Wall utilizes three simple shapes to easily build versatile, random-patterned walls. Mosaic is available in a broad range of natural stone color blends.



- A. Mojave
- B. Serpentine
- C. Sierra/Merlot Blend
- D. Sierra







A

# Square Foot







## Square Foot

For a more majestic presence, our *Square Foot* wall system utilizes larger-scale, cored wall-units in either *Classic* or *Weathered* finishes. This versatile, pinned system can build inside or outside curves and corners. Square Foot walls can be built with a traditional 1-inch setback or near-vertical, and will accommodate geogrid reinforcement to build walls to any height.

- A. Merlot (Weathered)
- B. Gray (Classic)
- C. Mojave (Weathered)



## Square Foot Color Selection





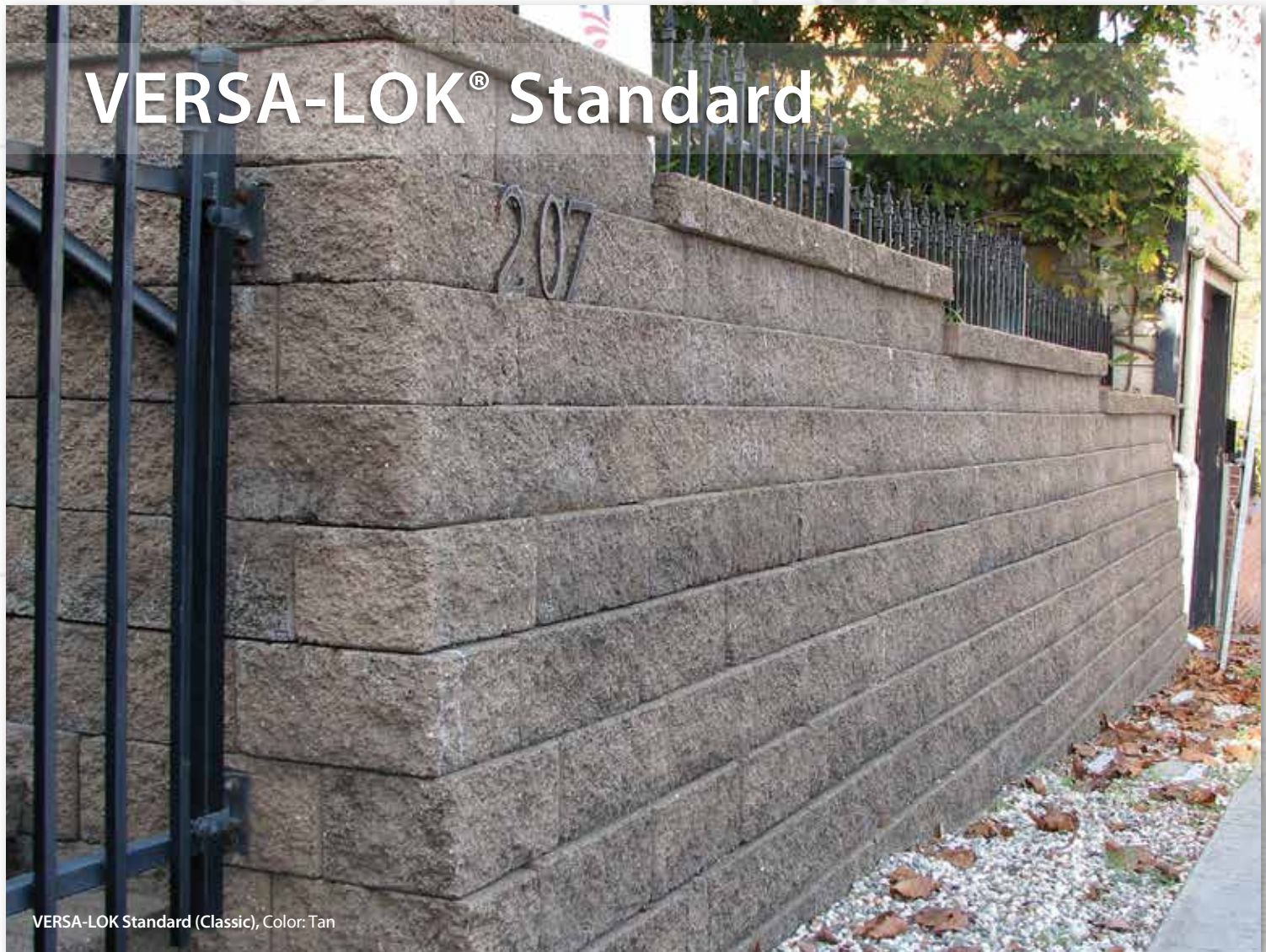
Please refer to pages 16–17 for specifications and page 22 for information on wall accessories.

*\*Call For Availability.*

- A. Merlot (Classic)
- B. Mojave (Weathered)
- C. Tan (Classic)
- D. Tan (Classic)



# VERSA-LOK® Standard



VERSA-LOK Standard (Classic), Color: Tan



VERSA-LOK (Classic), Color: Tan

## VERSA-LOK® Standard

Contractors, engineers and landscape architects agree that *VERSA-LOK* Standard's near-solid construction and unique pinning system provide an endless array of design options and strong durability with quick and easy installation.



Please refer to page 15 to see the new *VERSA-Green* Retaining Wall systems.

# VERSA-LOK® Standard: Stock Colors



Gray (Classic)



Tan (Classic)



Merlot (Weathered)



Mojave (Weathered)



Serpentine (Weathered)



Shasta (Weathered)



Sierra (Weathered)



VERSA-LOK Standard (Classic), Color: Gray

## VERSA-LOK® Standard: Non-Stock Colors

\* Call For Availability.



60°-10°  
HANDY-SCAPE



# Handy-Scape®

Handy-Scape, Color: Tan (Classic)

## Handy-Scape®

Ideal for low-level use (up to 3 feet), our Handy-Scape product is perfect for any do-it-yourselfer. Just simply stack the blocks on a granular leveling pad in the configuration you want. No muss, no fuss and no need for mortar or concrete footings.

Please refer to pages 16-17 for specifications and page 22 for information on wall accessories.

\* Call For Availability.



Gray (Classic)



Tan (Classic)



Mojave (Classic)\*



Serpentine (Classic)\*



Sierra (Classic)\*



Merlot (Classic)\*



# VERSA-Green®

VERSA-Green, Color: Tan



VERSA-Green, Color: Tan

## **VERSA-Green® is here!**

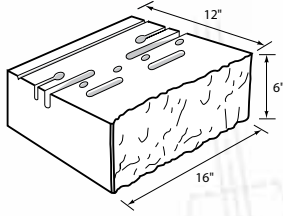
The new *VERSA-Green* Plantable Wall System is truly the greenest retaining wall available. It combines the durability and strength of a *VERSA-LOK* segmental retaining wall with the lush beauty of a hanging garden.

**Colors and Textures:** *Versa-Green* can be ordered in either Classic or Weathered textures, and in any of our colors (Tan, Gray, Merlot, Mojave, Serpentine, Shasta, Sierra, Sonoma, and Torino), but lead times and minimum orders may apply. Call for availability of specific colors.

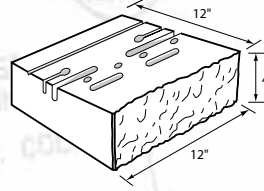


# Specifications

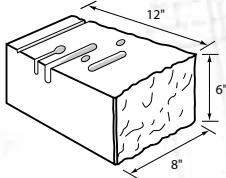
## Mosaic, Square Foot, Standard, and Handy-Scape Units



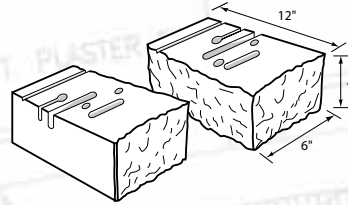
**STANDARD**  
**Styles:** Weathered Mosaic, Standard  
**Size:** approx. 12" x 6" x 16"  
**Weight:** 82 lbs. ea.  
**Coverage:** 1.5 pcs./ft.<sup>2</sup>  
**Pallet Quantity:** 36 units/pallet



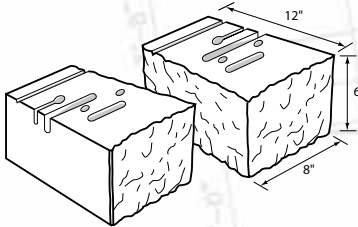
**ACCENT**  
**Styles:** Weathered Mosaic  
**Size:** 12" x 4" x 12"  
**Weight:** approx. 35 lbs. ea.  
**Coverage:** 3 pcs./ft.<sup>2</sup>  
**Pallet Quantity:** 80 units/pallet



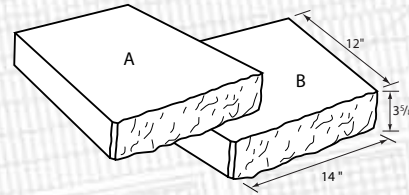
**COBBLE**  
**Styles:** Weathered Mosaic  
**Size:** 12" x 6" x 8"  
**Weight:** approx. 36 lbs. ea.  
**Coverage:** 3 pcs./ft.<sup>2</sup>  
**Pallet Quantity:** 72 units/pallet



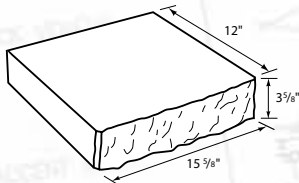
**HALF ACCENT**  
**Styles:** Weathered Mosaic, Standard  
**Size:** 12" x 4" x 6"  
**Weight:** approx. 17 lbs. ea.  
**Coverage:** N/A  
**Pallet Quantity:** 182 units/pallet



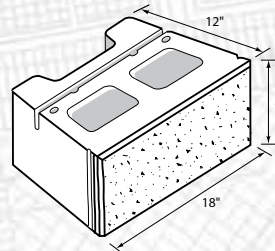
**HALVES**  
**Styles:** Weathered Mosaic, Standard  
**Size:** 12" x 6" x 8"  
**Weight:** approx. 35 lbs. ea.  
**Coverage:** N/A  
**Pallet Quantity:** 80 units/pallet;  
 Standard is 72 units/pallet



**A & B CAPS**  
**Styles:** Weathered Mosaic, Square Foot, Standard  
**Size:** 12" x 3 5/8" x 14"  
**Weight A Cap:** approx. 42 lbs. ea.  
**Weight B Cap:** approx. 48 lbs. ea.  
**Coverage:** 0.86 pcs./ft.<sup>2</sup>  
**Pallet Quantity:** 60 units/pallet

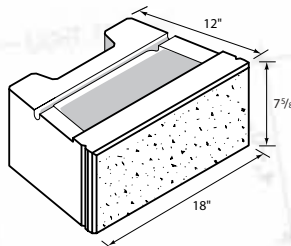


**RECTANGULAR CAP**  
**Styles:** Weathered Mosaic, Standard, Square Foot  
**Size:** 12" x 3 5/8" x 15 5/8"  
**Weight:** approx. 49 lbs. ea.  
**Coverage:** 0.77 pcs./ft.<sup>2</sup>  
**Pallet Quantity:** 60 units/pallet

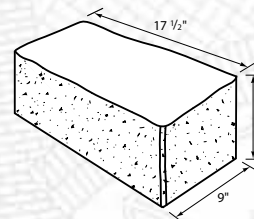


**SQUARE FOOT STANDARD**  
**Styles:** Square Foot  
**Size:** 12" x 8" x 18"  
**Weight:** approx. 88 lbs. ea.  
**Coverage:** 1 pc./ft.<sup>2</sup>  
**Pallet Quantity:** 36 units/pallet

## VERSA-Green® Units



**Size:** 12" x 7 5/8" x 18"  
**Weight:** approx. 75 lbs. ea.  
**Coverage:** 0.75 pcs./ft.<sup>2</sup>  
**Pallet Quantity:** 36 units/pallet



**SQUARE FOOT CORNER**  
**Styles:** Square Foot  
**Size:** 8" x 9" x 17 1/2"  
**Weight:** approx. 105 lbs. ea.  
**Coverage:** N/A  
**Pallet Quantity:** 30 units/pallet

STANDARD

COBBLE

ACCENT

ACCENT

COBBLE

STANDARD

ACCENT

ACCENT

ACCENT

ACCENT

STANDARD

COBBLE

ACCENT

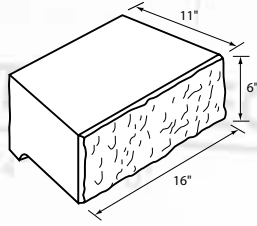
ACCENT

COBBLE

STANDARD

Weathered Mosaic walls are comprised of Standard, Cobble, Accent, and Half Accent units arranged in "panels" 10 inches high and 24 inches wide. There are four different panel configurations which can be arranged in any order to form a random pattern.

## Specifications (continued)



### HANDY-SCAPE®

Styles: Handy-Scape

Size: 11" x 6" x 16"

Weight: approx. 70 lbs.

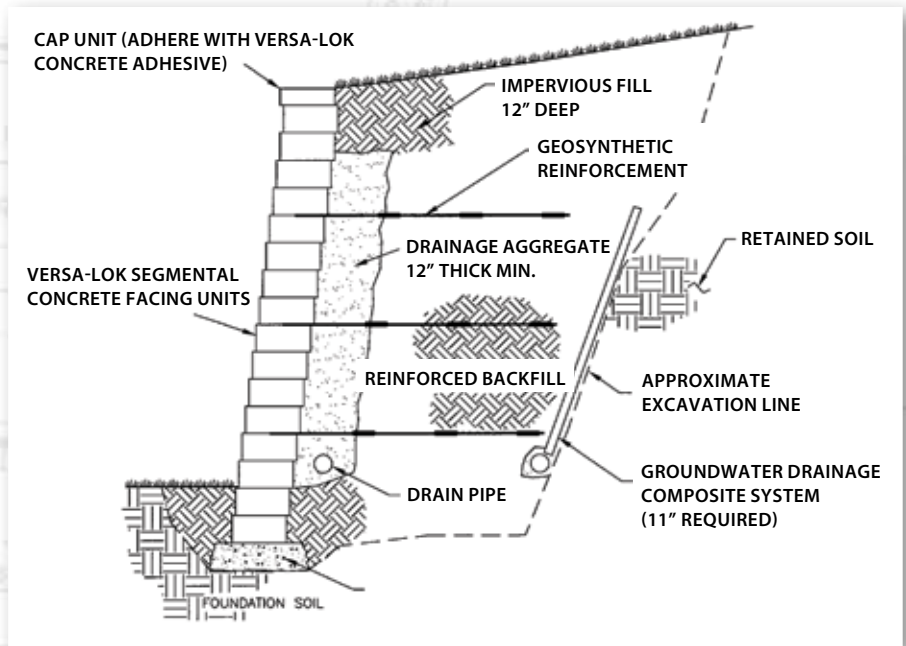
Coverage: 1.5 pcs./ft.<sup>2</sup>

Pallet Quantity: 36 units/pallet

## Reinforced Wall Typical Section

This cross section illustrates the typical components of VERSA-LOK Standard retaining walls. Mortarless *Standard* walls are installed on granular leveling pads and do not require concrete footings below frost. The amount and layout of drainage materials and geosynthetic soil reinforcement is site/soil dependent and should be designed by a qualified engineer. The 3/4 inch setback of each unit creates a batter of approximately seven degrees. Battered walls are structurally more stable than vertical walls because gravitational forces "pull" walls into retained soil.

For more information on reinforced wall installation, visit VERSA-LOK's Web site: [www.versa-lok.com](http://www.versa-lok.com).



VERSA-Green, Color: Tan



A. Mosaic, Color: Shasta

B. VERSA-LOK Standard & Cobble, Color: Tan Weathered

C. Mosaic, Color: Custom

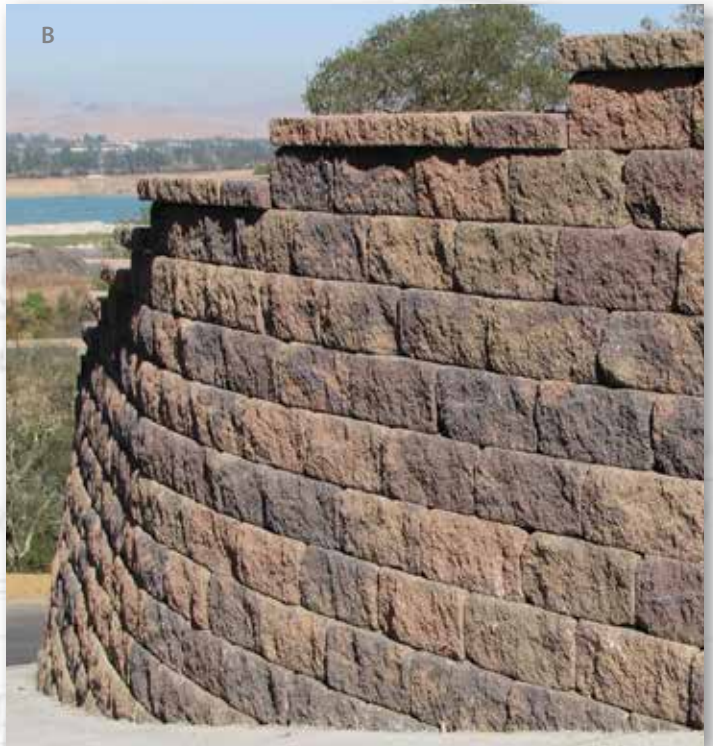
D. VERSA-LOK Standard, Color: Shasta Weathered



A. VERSA-LOK Standard (Classic), Color: Tan  
B. Mosaic, Color: Custom



A. VERSA-LOK Standard, Color: Custom  
 B. Square-Foot (Weathered), Color: Merlot



C. VERSA-LOK Standard, Color: Custom  
 D. Mosaic (Weathered), Color: Merlot



A. VERSA-LOK Standard (Classic), Color: Gray

B. Mosaic, Color: Custom

C. VERSA-LOK Standard (Weathered), Color: Custom

D. Mosaic, Color: Custom

E. VERSA-LOK Standard, Color: Custom

## Need help planning your home project?

### Visit our Website

We work with a number of design and builder professionals who can help you design your project, estimate the materials you'll need and do the work for you.

Visit us online at [www.mcnear.com](http://www.mcnear.com) and go to the *Request a Quote* page. We'll recommend an experienced, reliable and trustworthy designer or installer to help you.

You can also find more photos and information about all our McNear product lines at [www.mcnear.com](http://www.mcnear.com).



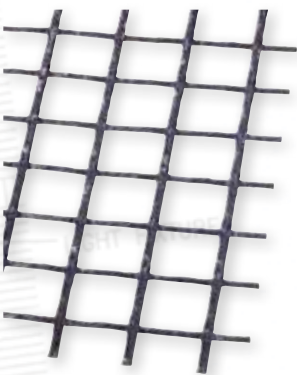
## Accessories

### Standard Adhesives



This is a high-strength, high-quality, structural grade construction adhesive designed for retaining walls, masonry and paving stones. It is durable enough to withstand extreme wear and tear including heavy vehicular traffic. Retaining Wall adhesive applies easily for a long-lasting, professional, all-weather installation.

### Grids



As wall heights or loads increase on a VERSA-LOK wall, geogrids are required to strengthen the wall structure. Walls over 3'- 4' ft in total height generally require engineered geogrid layer(s).

#### VERSA-LOK® VERSA-Grid™

VERSA-Grid aids soil reinforcements and helps wall stability. Its high tenacity, multifilament polyester yarns are resistant to natural chemicals, alkalis and acids so once you put it down, it won't degrade.

And installing VERSA-Grid is easy, too. Just unroll flat and make sure the VERSA-Grid is perpendicular to the wall face.

### VERSA-LOK® Accessories



#### VERSA-LOK® VERSA-TUFF® Pins and Snap-Off Pins™



VERSA-TUFF nylon/fiberglass pins are used to interconnect VERSA-LOK retaining wall units and help provide consistent alignment. Pins are non-corrosive and will not rust or stain wall faces. Snap-off Pins are used for Accent, Cobble, and Mosaic systems.

#### VERSA-LOK® VERSA-LIFTER™

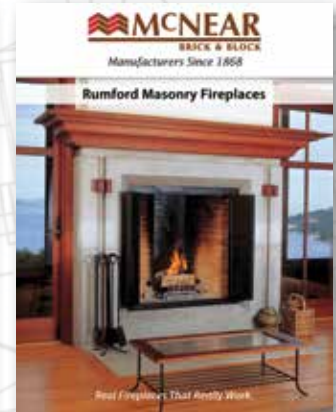
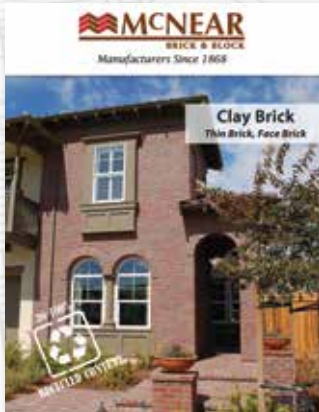
The VERSA-LIFTER makes it easier to lift and place units, especially on the base course. The two prongs on the lifter are placed into the holes in the VERSA-LOK unit. The action of lifting the handle secures the lifter to the unit and makes for easy, balanced lifting and placement. VERSA-LIFTERS are available from your local supplier.



## See Our Other Lines of McNear Products

McNear Brick & Block manufactures many other products besides our Retaining Walls; as the West's oldest brickyard, we offer a full line of Clay Bricks and Pavers. Additionally, we are a leading, regional manufacturer of Interlocking Pavers.

Visit us online at [www.mcnear.com](http://www.mcnear.com) to download or request brochures and samples, and to see our newest colors and products.



### McNear Products are Green!

Besides the inherent environmental advantages derived from using natural products, McNear Bricks have the added advantage of being *produced from up to 100% post-consumer recycled materials.*



- Thin Brick
- Face Brick
- Interlocking Pavers
- VERSA-LOK® Retaining Walls
- Rumford Fireplaces



1 McNear Brickyard Rd., San Rafael, CA 94901

Phone: 888-442-6811  
 Fax: 415-257-6353  
 E-mail: [sales@mcnear.com](mailto:sales@mcnear.com)  
[www.mcnear.com](http://www.mcnear.com)